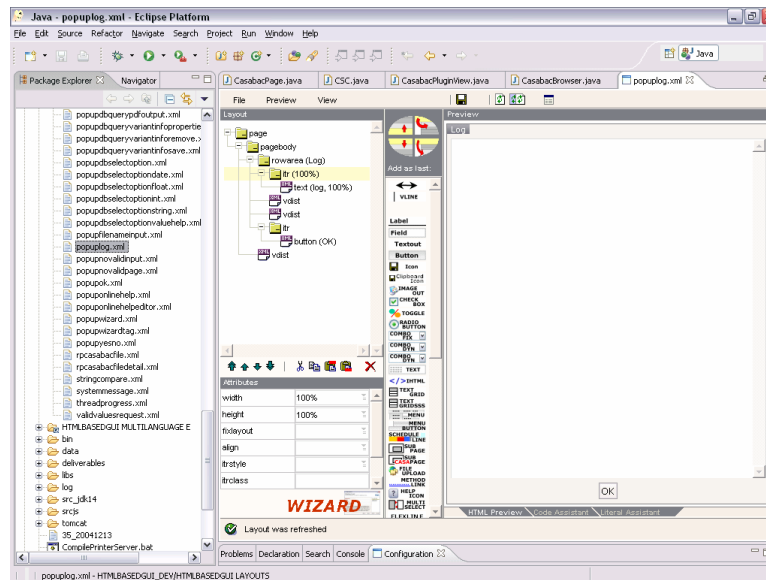


Casabac Eclipse Plugin

The Casabac Eclipse Plugin allows you to use the Casabac toolset directly integrated into the Eclipse development environment. Example: you may start the Casabac Layout Editor for editing XML layout definitions directly via right mouse button click for a certain layout file:



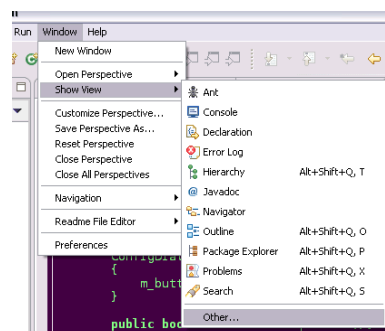
Functional Overview

Plugin Functions

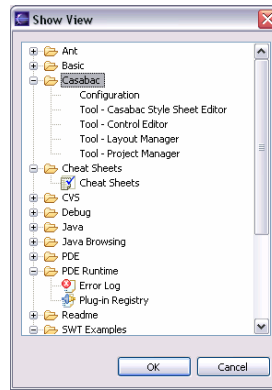
The Casabac development tools...

- Project Manager
- Layout Manager
- Layout Painter, Layout Tester
- Control Editor
- Style Sheet Editor

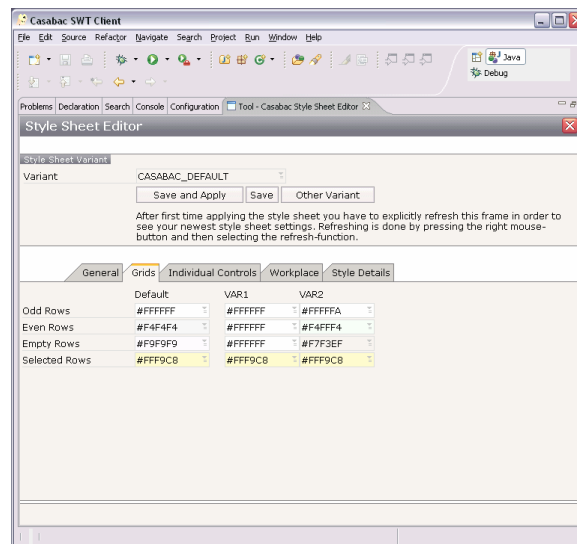
...are available directly inside the Eclipse environment. You can reach them by opening:



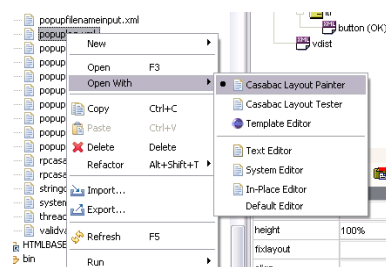
A window will popup showing:



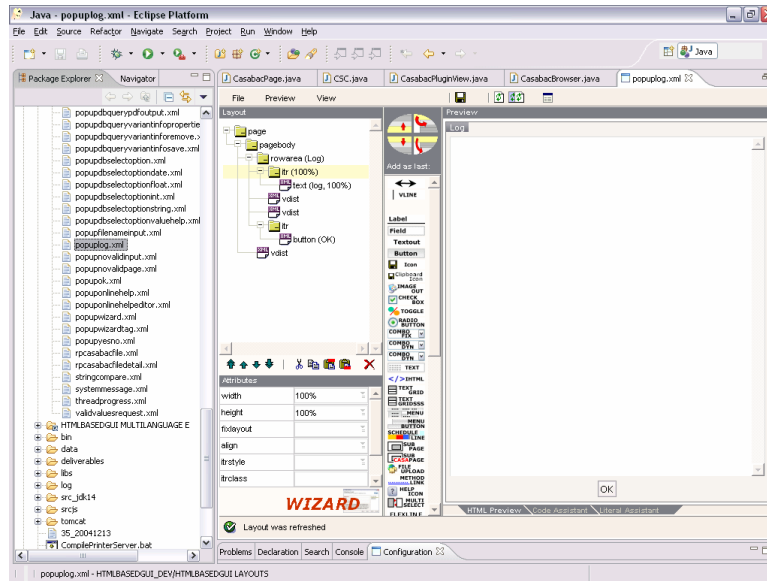
After e.g. opening the "Casabac Style Sheet Editor" Eclipse will open the tool in its workspace:



The Layout Painter (Casabac's tool for editing XML Layout Definitions) and the Layout Tester are available by clicking with the right mouse button onto an XML layout definition:

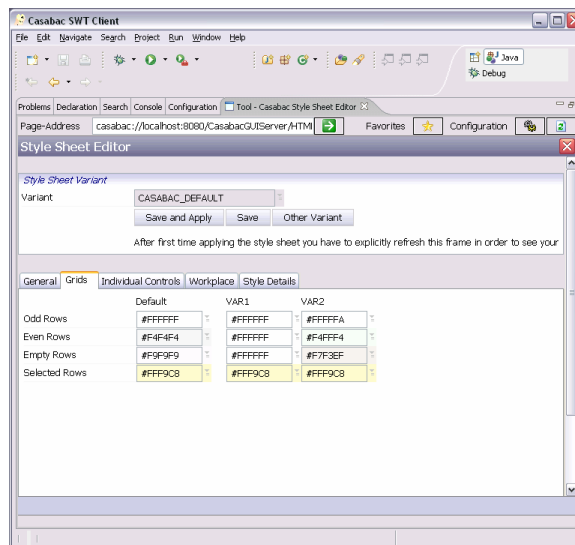


As consequence the tool will be opened and you can directly edit/test the layout definition:



HTML Mode ↔ SWT Mode

The plugin can either be switched to use the web client for displaying the tools or can be switched to use Casabac's SWT client. Example: the style sheet editor in SWT-mode looks like:



View the chapter "Installation → Configuration" for more details.

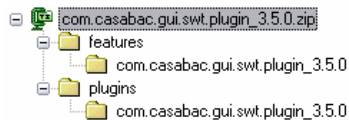
Connection to Casabac GUI Server

All Casabac tools still are running "against" a Casabac GUI Server installation - i.e. the front end part of the tools is running in Eclipse, the server-part is running in Casabac GUI Server. This GUI Server must be installed and started prior to using the Casabac plugins.

Installation

Unzipping Files

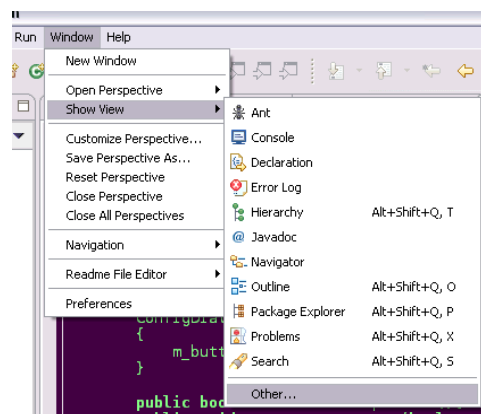
The Casabac Eclipse Plugin can be downloaded via Casabac's download area that is part of Casabac's web site www.casabac.com. It is a straight ZIP file that contains the following directory structure:



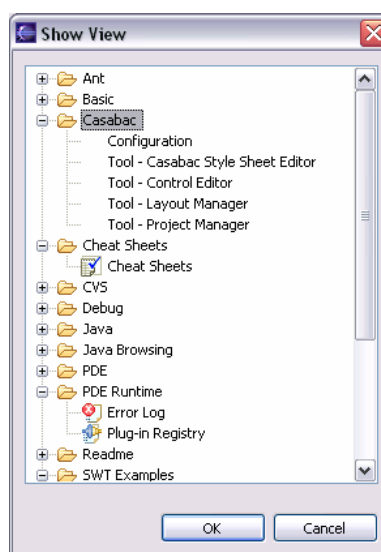
Installation is done by unzipping the file into the directory of your Eclipse installation. Your Eclipse installation already contains a "features" and "plugins" directory - install the Casabac plugin into the existing directory structure.

Checking if enabled

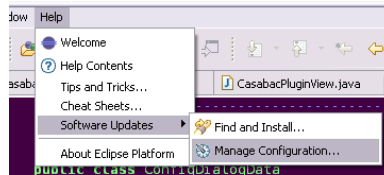
After restarting Eclipse you can test the availability of the Casabac plugin by opening the corresponding views coming with the plugin. Open the following menu item...



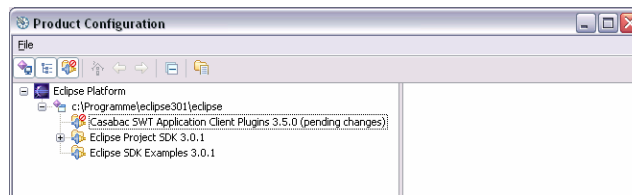
...and check if the Casabac views are available:



If you cannot see the Casabac views then open the following menu item:



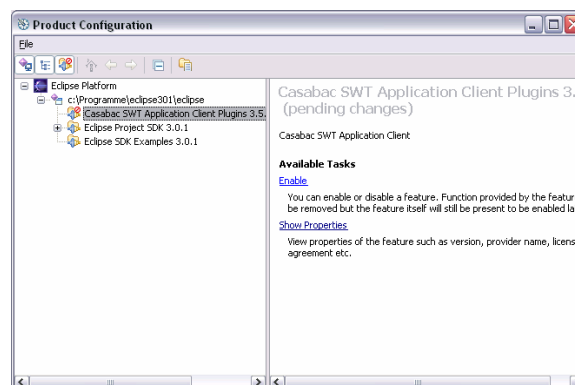
A window will popup, showing the installed features of your Eclipse configuration:



You may not see the Casabac plugin unless clicking on the icon "Show Disabled Features":



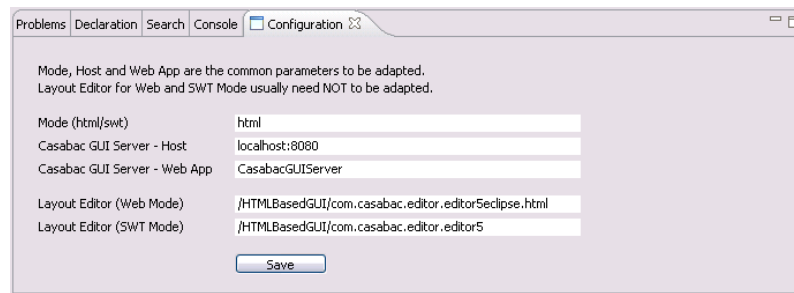
Select the "Casabac SWT Application Client Plugins" from the tree and choose "Enable" from the right window:



Eclipse will recommend to restart after enabling the plugin. After restart you should see the Casabac views to be available.

Configuring the Casabac Plugin

One of the Casabac views that are added to Eclipse is the Configuration view. Choose the view by opening "Window → Show View → Other..." and selecting "Casabac → Configuration" from the list.



In this screen you define the plugin settings:

- **Mode:** defines if the Casabac SWT client or the Web Client is used for showing the corresponding pages
- **Host:** the host name and port number of the Casabac installation that you use for development
- **Web App:** the name of the web application that you use for development

The file name of the Layout Editor (Web/SWT mode) are typically not changed on your side unless Casabac recommends to do so.

The data that you input is stored inside a file that you find in the Eclipse workspace's ".metadata/.plugins"-directory.

If you work with the default Casabac GUI Server installation then there's nothing for you to change - just use the default configuration parameters.