

# Release Plan 2.5

## Overview

Release 2.5 is the next functional release following our 2.0 Release. There is no 2.1, 2.2 – but 2.5! Roll out will start in **October 2003**, first development builds will be published from end of July on!

This document lists the features that we are working on. Please feel free to send comments to [info@casabac.com](mailto:info@casabac.com)!

## Focus

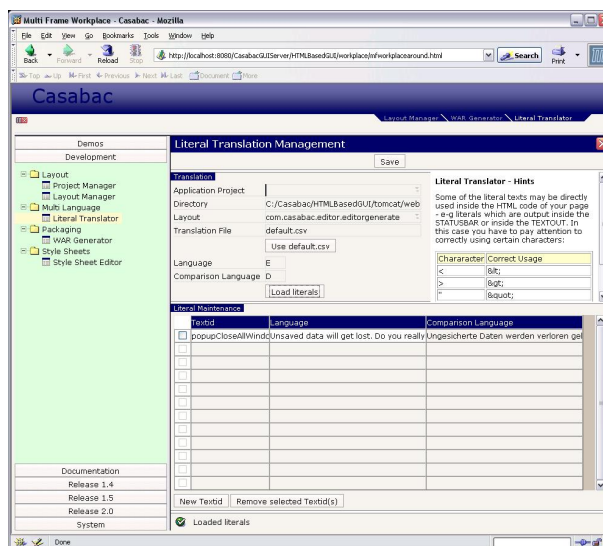
Our development work is focussed on the following top issues:

- Mozilla 1.4/ Netscape 7.1 production support
- Enhancements in development tools
- Workplace Designer
- Performance improvements
- Continuous improvements for these issues that were introduced with release 2.0

Let's have a closer look on each issue!

## Mozilla 1.4/ Netscape 7.1 - Release for productive Usage

Casabac will be released for "productive usage" for Mozilla 1.4 and Netscape 7.1. Up to 2.0 it was released for "development usage" only.



Literal Translator – Mozilla 1.4

Mozilla 1.4 is the newest officially released version of the Mozilla browser. It is available for

- Windows
- Linux
- Apple OS/X

Netscape 7.1 is the Netscape browser version internally basing on Mozilla 1.4.

## Development Tools

The Layout Painter will be made the central tool for:

- (1) creating the layout via WYSIWYG editing
- (2) creating the adapter code behind the layout
- (3) maintaining literals in certain languages

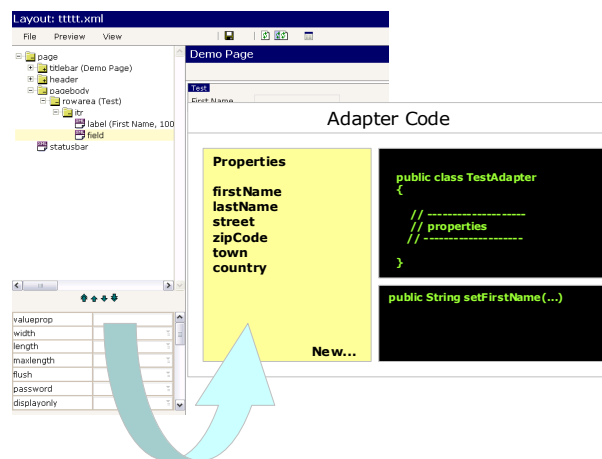
Currently it serves task (1) primarily – task (2) and (3) are available through separate tools running in parallel to the Layout Painter.

When defining a control inside the Layout Painter then the control contains attributes, defining:

- (1) the layout and rendering of the control
- (2) the binding of the control to server side adapter properties and methods

Aspect (2) will be much better supported in the 2.5 release:

When adding a control to a layout, e.g. a field then this field must be bound to an adapter property of the server side adapter class. Via the normal Casabac value help a popup will be opened:



Inside the popup you can:

- (1) Select existing properties.
- (2) Create new properties. When creating new properties the corresponding code will be automatically generated. The exact place where the code will be added to the existing adapter code will be determined explicitly by the developer.

By this mechanism you will be able to maintain layout and code in parallel. The code will be analysed by code parsing – there will not be any comments inside the code in order to make the system find properties or other relevant objects.

Similar popup windows will be available for

- (1) Adding methods (e.g. inside the definition of a button)
- (2) Adding textid translations for the multi language management.

## Performance Improvements

There are two aspects of performance improvements:

- (1) Reducing the client side (= browser) rendering effort
- (2) Reducing the roundtrips in scenarios in which several pages need to be updated

### Reducing the Client Side Rendering Effort

Several aspects are under development:

- "Cheap TEXTGRID"-column: the text grid is a powerful and nice control – but also requires quite a lot of client side resources to render. We will provide for a "simple, easy" column type reducing the rendering effort by approximately 40-50%.
- "Focus Management": the focus management internally tries to find the optimal control to put the focus to when the page is shown the first time. Currently it has to parse the whole document (DOM tree) in order to find out which control is the best one to put the focus to. This will be made some more explicit in order to save this time.

### Roundtrip Reduction

Not to confuse you: a Casabac page in general updates all its inner data with one roundtrip to the server. But there are certain scenarios in which two or more roundtrips are internally done:

- (1) Switching the page
- (2) Integrating one page into another page (SUBCASAPAGE control)
- (3) Inter frame communication (e.g. in the workplace)

In one response for one page several responses of other pages will be includable – so that these pages do not have to collect their data via an extra http roundtrip.

## Workplace Designer

Currently Casabac offers one workplace – the "Multi Frame Workplace". It allows to you to position functions in several trees on the left, start functions within a content area in the centre and to switch between open functions in a top area. The workplace is configurable – i.e. the functions are determined by a piece of code you can integrate via a defined interface.

Now we will provide for the possibility to assemble an own workplace in an easy way. Maybe you want a certain "search-frame" to be available all the time. Or you want to have a certain info area to be visible all the time.

For this purpose there will be a so "Workplace Designer" in which you can assemble your workplace frames in an easy way – and generate a workplace frameset definition. The "layout" of the workplace will be an XML definition, the generation process will be integrated into the normal Casabac control generation process.

## Continuous Improvements

Of course many “smaller features” will be added to the base functions and controls. A detailed list will be added in short term to this document.

This is a document explaining our development plan. Please note that the plan may still be changed!